



# IP FABRIC



## IP Fabric | Správa Železnic

How SŽ sped up incident resolution and got a clear overview of its infrastructure thanks to IP Fabric



## Revenue

34 Billion CZK per annum



## Size

17,000 permanent staff



## Network

6,300 connected sites

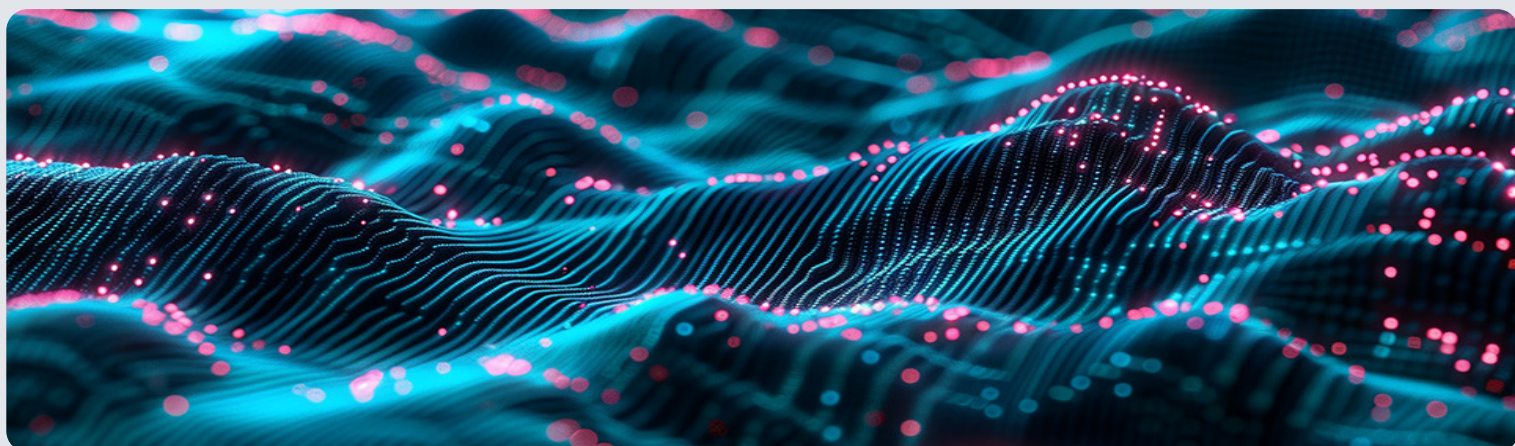


## About

SŽ's main task is to ensure the operation, maintenance, modernization and expansion of the Czech Republic's railway network, with a current total length of over 9,377km. This includes amongst other items 6,719 bridges, 166 tunnels and 1,082 train stations.

With over 17,000 employees distributed across approximately 6,300 locations, SŽ uses its network to manage and operate their expansive national infrastructure. The company is made up of a number of different specialist teams that use the network for a variety of different tasks, including:

- Rail transport data collection, analysis and logging;
- Energy management;
- Investment and inventory monitoring;
- Documentation distribution;
- E-comms, video conferences and IP telephony.





## Challenge

### Consolidating diverse site documentation into a single source

SŽ needed a solution that could help them document and maintain an accurate inventory for their network, which is widely distributed across thousands of locations in the Czech Republic. Furthermore, they needed their chosen tool or platform to help them drastically improve and simplify their troubleshooting processes, reduce downtime, improve security support and promote a simplified approach to their overall network operations.



## Solution

On the first day of IP Fabric being deployed in their system, the SŽ team had a complete network inventory at their disposal. The process was entirely automatic and provided a complete overview of not only the network, but also of the state of the devices within. This saved the team hundreds of man hours – without the risk of human error creeping in.



### **IP Fabric significantly reduces required time and human resources and enables the rapid response to internal requirements or network incidents.**

*IP Fabric enabled my team to save a lot of time during the diagnosis and identification of issues in our network. A huge advantage is the ability to generate network map diagrams, which provide a clear overview of connections protocols, devices and simplify the identification of non-standard setups or situations. The automatic report generation completely freed up the hands of my team during regular device and network inventORIZATION.*

— Miloš Matějka Network Operations & Diagnostics Manager, Správa Železnic



## Challenge

### Keeping track of a massive network estate

SŽ needed to create and manage accurate inventories. For a widely distributed network as large as that of SŽ, this is no easy feat to perform manually. Aside from this, the team wanted to find a solution that simplified the process of creating inventories for auditing purposes with external services.



## Solution

After installing and completing the initial setup, IP Fabric completely mapped out SŽ's network, including all devices. IP Fabric was able to automatically discover and highlight weak points and inconsistencies in both their network topologies and their configurations. This visibility enabled the team to resolve these issues without a challenge. This, in turn, improved the stability and security of their wider network estate.

Using this newfound deeper understanding of their current network estate, the SŽ team knew what was needed to make further improvements and were able to base their choices of external service providers off of this.



## Benefits

- Automated network component discovery simplifies site handovers
- Comparison of current and historical network state reduces human error risk
- Intuitive and clear GUI presents key information comprehensibly
- Data can be shared easily with other teams and external organizations
- Improved network security through clear visibility and oversight





## About IP Fabric

IP Fabric is a vendor-neutral network assurance platform that automates the holistic discovery, verification, visualization, and documentation of large-scale enterprise networks, reducing the associated costs and required resources whilst improving security and efficiency.

It supports your engineering and operations teams, underpinning migration and transformation projects. IP Fabric will revolutionize how you approach network visibility and assurance, security assurance, automation, multi-cloud networking, and trouble resolution.



### **Don't take our word for it**

See how assurance can transform your approach to network management.

[Access the demo](#)



Support & Documentation  
<https://docs.ipfabric.io>



**HQ Office Boston**

98 North Washington St.  
Suite 407  
Boston, MA 02114  
United States

+1 617-821-3639



**IP Fabric UK Ltd.**

Gateley Legal,  
1 Paternoster Square,  
London,  
England EC4M 7DX

+420 720 022 997



**IP Fabric s.r.o.**

Kateřinská 466/40  
Praha 2 - Nové Město,  
12000  
Czech Republic

+420 720 022 997



[ipfabric.io](https://ipfabric.io) 