



**IP FABRIC**



# IP Fabric | Documentation



## Challenge

Up-to-date, trustworthy documentation is an essential but often unrealistic goal. It takes a lot of your team's time, it's prone to human error (which causes more errors down the line, when your engineers are working off inaccurate documentation), and by the time you hit "save", something has changed, and it's no longer up to date.



## Solution

With an automated documentation solution, the headache of manual updates, errors, and referencing incorrect documentation is immediately eliminated. This simple first step lays a solid foundation for your teams to confidently run forth with projects, knowing that all the information they need is easily accessible. IP Fabric:

1. Gathers the network data through automated discovery
2. Interprets and understands how everything in your network is interconnected
3. Automatically generates updated network documentation for your use



## Benefits

- An always accurate and complete network inventory
- An always up-to-date network inventory (thank to scheduled or on-demand snapshots)
- Accessed with a few clicks; can be accessed by teams with different skill sets in your organization, not just the network team
- Automatic discovery and documentation alone account for 90% of the manual work your teams would need to get through before starting network automation projects.

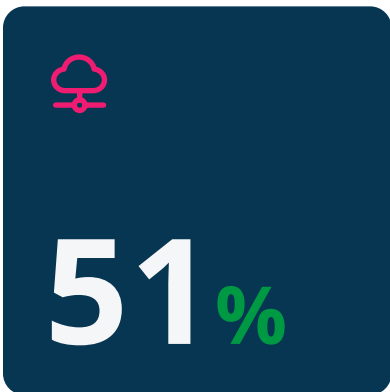


# IP Fabric | Documentation



of organizations have automation tools that require at least some manual data gathering before implementing a change

SOURCE: EMA 2022



of these organizations say manual data gathering has a negative impact on the effectiveness of their automation.

SOURCE: EMA 2022

The screenshot shows the IP Fabric interface with a 'Snapshot Selection' window. It displays two snapshots: '2024-01-31, 09:15:43 Z Day 4' and '2024-01-31, 07:50:03 Z Day 3'. A 'Compare changes' button is visible. Below, the 'Summary of Changes' section shows a table of device changes.

Status	Hostname	SN	Login IP	Image	Configuration Register	Processor	Reload	Version	Uptime
not changed	c1xr02	d4aa2759485	192.168.1.102				Router rebooted after a normal shutdown.	21.3R1.9	167
not changed	s2xw01	517J4617C468READ8F20488148D3948	192.168.1.126					4.27.0F	166
not changed	s4xw05	6EFD9E0EFF5C28CD1B05B0CA1B67A3F	192.168.1.144					4.27.0F	158
not changed	s4xw03	BC8ECC0A486DF93050283BCBF85591	192.168.1.142					4.27.0F	158
Added	s5xr08	a000038	192.168.1.156	flash0:/vios-adventerprisek9-m	0x0		reload	15.6(2)T	160
not changed	s4xw04	JACC4C10A0256A440889583C95A8243E	192.168.1.143					4.27.0F	158
not changed	s2ngw1	FF5E10DACCD4D01217E2C15FF321901	192.168.1.125					4.27.0F	166
Added	s5xr07	a000037	192.168.1.155	flash0:/vios-adventerprisek9-m	0x0		reload	15.6(2)T	160
not changed	d3xr01	a000008	192.168.1.108	flash0:/vios-adventerprisek9-m	0x0		reload	15.6(2)T	161
not changed	c1xr03	eab19849667b	192.168.1.103				Router rebooted after a normal shutdown.	21.3R1.9	167
not changed	s4xw07	03B74C5392A877190F2F47D44811791	192.168.1.146					4.27.0F	158

# Use Cases

So, you have one of the following coming up shortly and you need your network properly documented...

- Audit
- Cloud Migration
- Merger & Acquisition

## How would automated discovery & documentation help you?

- **Save your team from time-consuming, unnecessary research and manual work**

Incomplete documentation means time spent playing detective when something goes wrong in the network. With large, complex networks that are changing dynamically, this becomes a resource heavy mission very quickly.

IP Fabric shows you the actual network state on any given day that you took a network snapshot, meaning you can compare differences and diagnose issues quickly.

Additionally, we normalize the data we collect about your network into flexible and comprehensive network models, meaning regardless of vendor, you have the information you need with just a few clicks.

The screenshot displays the IP Fabric Network Viewer interface. The main area shows a network topology diagram with various nodes and connections. The nodes include L71FW7/loop, L71FW7/root, L71FW9/root, L71EXR1, L71EXR2, L71EXR3, L71EXR4, L71R3, L71R4, L71R5, L71R6, L71R7, L71R8, L71R9, L71R10, L71R11, L71R12, L71R13, L71R14, L71R15, L71R16, L71R17, L71R18, L71R19, L71R20, L71R21, L71R22, L71R23, L71R24, L71R25, L71R26, L71R27, L71R28, L71R29, L71R30. The connections are labeled with L1, L2, L3, L4, L5, L6, L7, L8, L9, L10, L11, L12, L13, L14, L15, L16, L17, L18, L19, L20, L21, L22, L23, L24, L25, L26, L27, L28, L29, L30. The interface also shows a sidebar with navigation options like Network Viewer, Path Lookup, Intent Checks, and Compare Snapshots. At the bottom, there are two tables: 'XDP neighbor table' and 'Cumulative IPv4 routing table'.

Router	Site	Route	Prefix...	Prot...	VRF	MMH	NH L...	NH L...
L71R3	L71	10.49.255.131/32	32	O E2			2	4233600
L71R3	L71	10.49.26.0/24	24	O E2			2	4233600
L71R3	L71	10.39.254.92/30	30	O E2			2	4233600
L71R3	L71	10.62.20.0/24	24	O E2			2	4233600
L71R3	L71	10.45.124.0/24	24	O E2			2	4233600
L71R3	L71	10.47.254.0/30	30	O E2			2	4233600
L71R3	L71	10.33.157.0/24	24	O E2			2	2764800

Loca...	Loca...	Site	Rem...	Remote IP	Rem...	Rem...	Prot...	Network de...	Rem...	Man...	Cat
L71EXR1	Eto/1	L71	L71R3	10.71.101.103	Eto/1	cdp	Network device	Managed	rol		
L71EXR1	Eto/2	L71	L71R4	10.71.102.104	Eto/1	cdp	Network device	Managed	rol		

### → Data democratization leads to harmony across

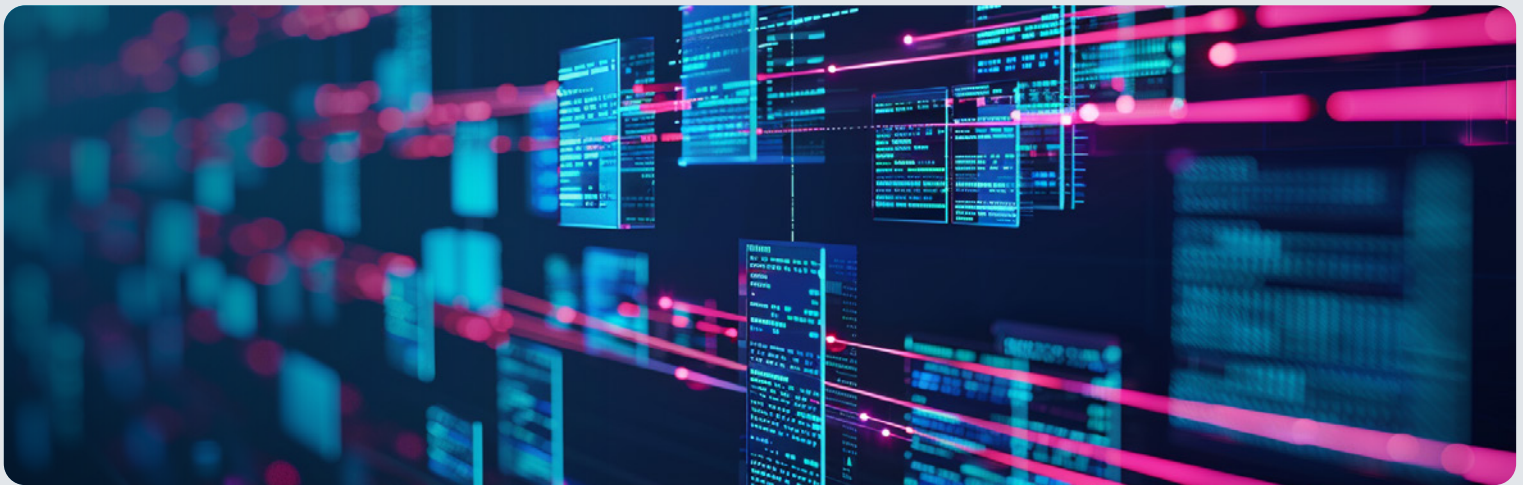
Security, C-level, or infrastructure teams do not have to rely on the network engineer to answer questions about the network when the information they need is at their fingertips, and they can trust it to be accurate.

### → Work from consistent data, reducing errors

Automatically updated network documentation helps teams across your entire organization work in a consistent way from a unified network source of truth.

### → Add a proactive approach to your connectivity and security protection, and speed up reactivity

When you don't know what is in your network, you can't plan improvement and proactively protect your connectivity and security. Automating documentation not only gives your teams the right data to work from, but it gives them the time back they need to plan innovation in your network.



## More Resources

- How IP Fabric fully automated Transgourmet's documentation and topology workload. Read the Case Study [here](#).
- How S&P Global built a Network Observability Platform with IP Fabric. Listen to the podcast [here](#).



## About IP Fabric

IP Fabric is a vendor-neutral network assurance platform that automates the holistic discovery, verification, visualization, and documentation of large-scale enterprise networks, reducing the associated costs and required resources whilst improving security and efficiency.

It supports your engineering and operations teams, underpinning migration and transformation projects. IP Fabric will revolutionize how you approach network visibility and assurance, security assurance, automation, multi-cloud networking, and trouble resolution.



### **Don't take our word for it**

See how assurance can transform your approach to network management.

[Access the demo](#)



Support & Documentation  
<https://docs.ipfabric.io>



**HQ Office Boston**

98 North Washington St.  
Suite 407  
Boston, MA 02114  
United States

+1 617-821-3639



**IP Fabric UK Ltd.**

Gateley Legal,  
1 Paternoster Square,  
London,  
England EC4M 7DX

+420 720 022 997



**IP Fabric s.r.o.**

Kateřinská 466/40  
Praha 2 - Nové Město,  
12000  
Czech Republic

+420 720 022 997

